

Subway - Vanity Unit

Features

- Vanity Unit
- 23 1/8" x 23 1/4" x 17 7/8" (587 x 590 x 454 mm)
- Wall-mounted
- Incl. fixation set
- 2 pull-out compartments
- 1 accessory box large
- Soft closing
- Fully assembled



Codes / Standard applicable

Specified model meets or exceeds the following

- CARB Compliant materials
(ATCM 93120_93120.12 Title 17)
CARB P2

Colors - XX

- DH = Glossy White
- FP = Glossy Grey
- FQ = Oak Graphite
- E8 = White Wood

Product Description

Front: Glossy White, Glossy Grey, Oak Graphite, White Wood (MDF, vinyled)

Corpus: Glossy White, Glossy Grey (MDF, vinyled), Oak Graphite, White Wood (particle board, melaminated)

Handle (recessed grip): Chrome Finish

Pull-out element: fitted with Soft Closing feature

Interior compartments: plastic accessory box 9/10

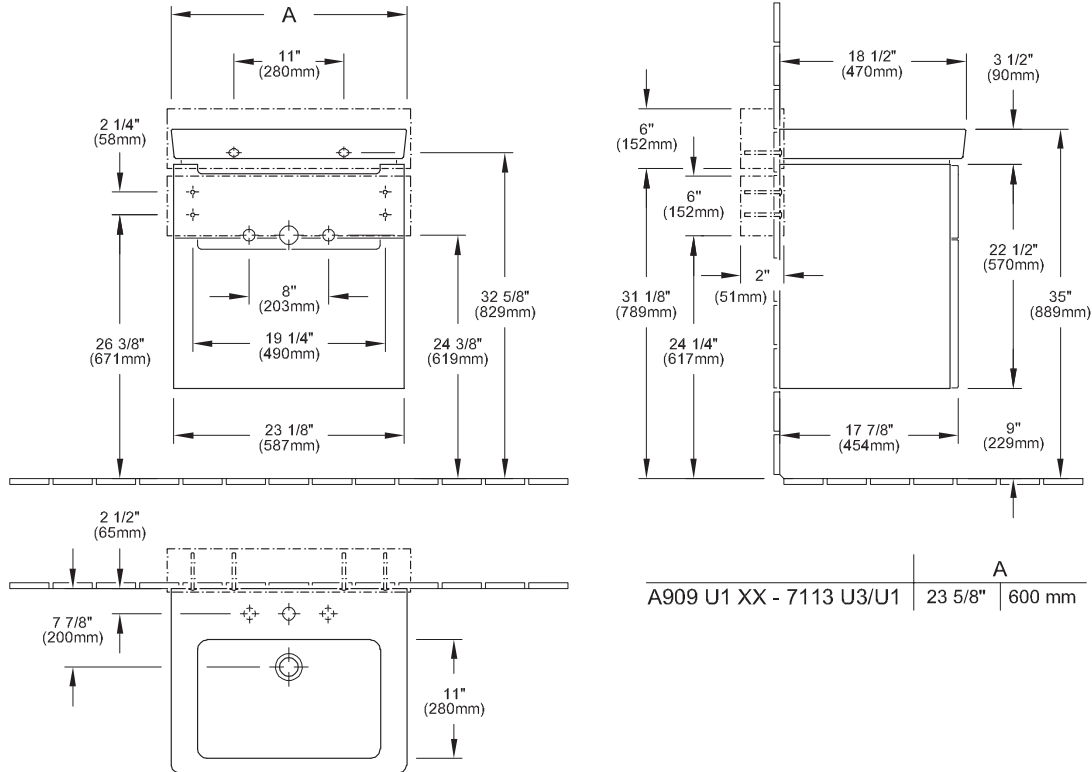
Included Components

- 4 x wood screws RUKO-KS 1/4" / 2" (5,5/50 mm)
- 4 x UNI-dowel Nylon 3/8" x 1 5/8" (8x40 mm)
- 1 x pouch 3 15/16" x 7 7/8" (100x200 mm)

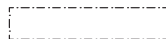
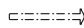
Installation Notes

Install this product according to the installation manual.

Technical Drawing



	A
A909 U1 XX - 7113 U3/U1	23 5/8" 600 mm

-  + Indicate location for inwall support bracket
- + Dimensions taken from finished floor level
- + Sink not included
-  Wall mounting