

# KOHLER® Faucets

Wall-mount faucet trim w/Insight™ technology, no valve

**Purist®**

**K-T11837**

## Features

- 0.5 gpm (1.9 lpm) maximum flow rate.
- This is trim set only. It requires valve kit to complete the faucet.
- Vandal-resistant aerator.
- 8-1/4" (210 mm) spout reach.
- Less drain.
- Safe Drinking Water Act (SDWA- Low Lead) compliant.

## Material

- On demand on and off. Valve kit is factory set to 30 second max. continual run cycle if it turned on continuously.
- Brass construction.

## Technology

- Valve kit has electronic Insight™ Sensor Technology for accurate and consistent activation.
- This trim set can be used with 11830-NA (Hybrid-DC power) wall mount valve or 11843-NA (AC Power) wall mount valve.

## Installation

- Single-hole spout mounting. Please consider appropriate distance between spout and sensor.
- Below the counter valve for easy installation and maintenance.

## Required Products/Accessories

K-11843 Wall-mount Valve for Touchless Faucets

or

K-11830 Wall-mount Valve for Touchless Faucets

## Recommended Products/Accessories

K-23726 Drain treatment

K-23723 Faucet cleaner



ADA

CSA B651

OBC

## Codes/Standards

ASME A112.18.1/CSA B125.1

NSF/ANSI 372

All applicable US Federal and State material regulations

DOE - Energy Policy Act 1992

California Energy Commission (CEC)

ADA

ICC/ANSI A117.1

CSA B651

OBC

## KOHLER® One-Year Limited Warranty

See website for detailed warranty information.

## Available Colors/Finishes

*Color tiles intended for reference only.*

### Color Code Description



CP Polished Chrome



VS Vibrant® Stainless

1-800-4KOHLER (1-800-456-4537)

Kohler Co. reserves the right to make revisions without notice to product specifications.

For the most current Specification Sheet, go to [www.kohler.com](http://www.kohler.com).

4-28-2020 07:18 - US/CA/MX

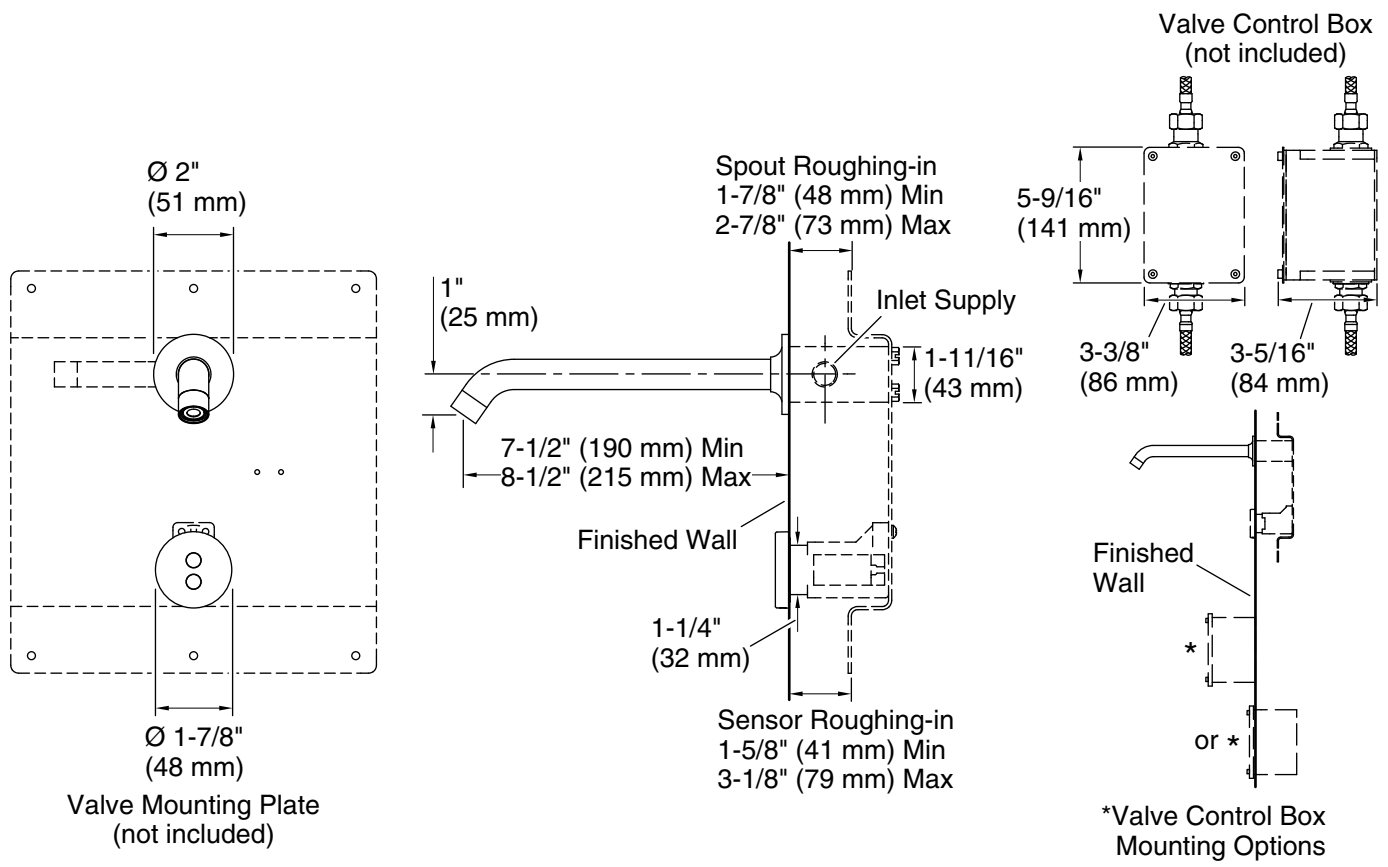
THE BOLD LOOK  
OF **KOHLER**®

# KOHLER® Faucets

Wall-mount faucet trim w/Insight™ technology, no valve

**Purist®**

**K-T11837**



**Technical Information**

All product dimensions are nominal.

**Notes**

Install this product according to the installation guide.

The sensor roughing-in allows for installation to a back splash or thicker finished wall than the spout roughing-in.

ADA, OBC, CSA B651 compliant when installed to the specific requirements of these regulations.