

**AXOR Montreux  
Pot Filler, Wall-Mounted**

Finishes : **chrome** Part no. : **16859001**



**Description**

**Features**

- Swivel range 180°
- Aerated spray
- Wall-mounted
- Flow: 2.5 GPM (9.5 L/Min)
- 90° ceramic valves
- 1/2" NPT
- Includes cross and lever handles
- California Low Lead / Section 116875 CHSC

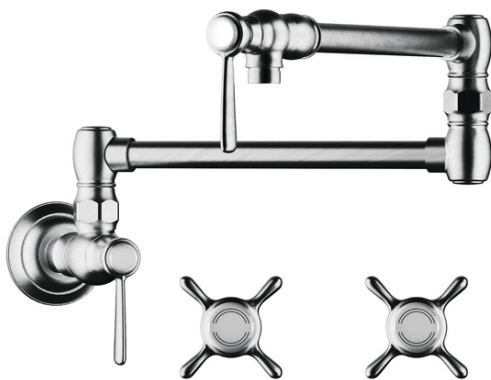
**Item details**

List Price \$ 1,055.00

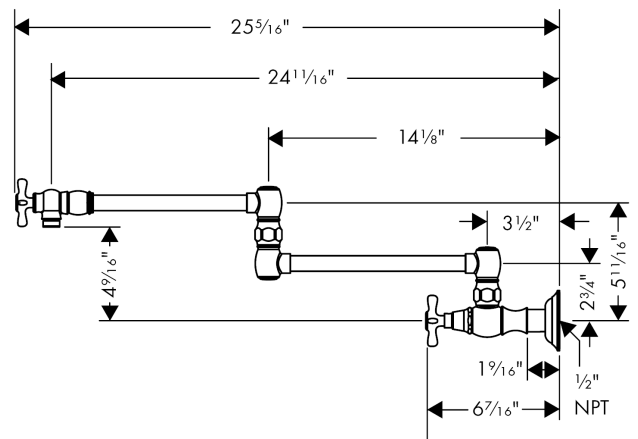
**Compliance**



**Product image**



**Scale drawing**



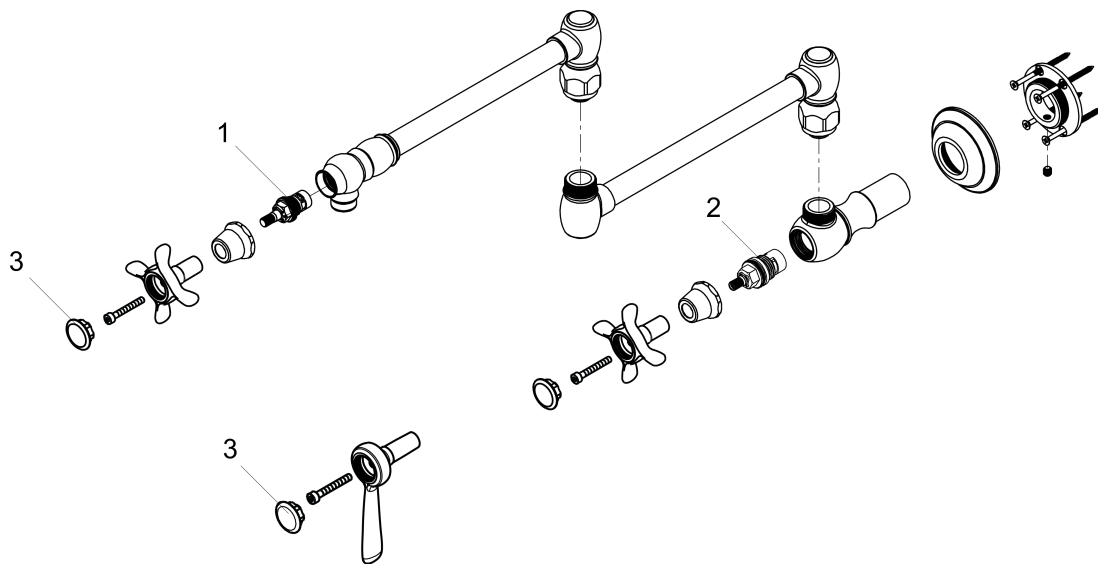
**AXOR Montreux  
Pot Filler, Wall-Mounted**

Finishes : **chrome**    Part no. : **16859001**



**Exploded drawing**

Year of production: >08/10



**AXOR Montreux  
Pot Filler, Wall-Mounted**

Finishes : **chrome** Part no. : **16859001**



**Spare parts list**

Year of production: >08/10

Pos.	Description	Part no.	Price	PU
1	set of screw covers, cold / hot water / neutral	97987000	-	1
2	shut off unit	88790000	-	1
3	shut off unit	88789000	-	1